



Waxman Ceramics
Architectural Tiles



 **MURALS**

collection **BOTTEGA**
Glazed Porcelain
EN14411 Annexe G
Group Bla

EPD 



MURALS

Glazed Porcelain

BOTTEGA

COLOURS



Bianco
20x20cm

④

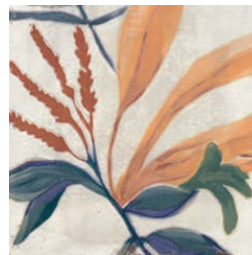


Play
20x20cm

④



Decors mixed randomly



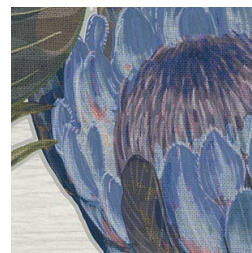
Sonata Deco
20x20cm

③



Decors mixed randomly

Slip Resistance		
	R10	+36



Mural Protea
20x20cm

③



36 Piece Set

MURALS

Glazed Porcelain

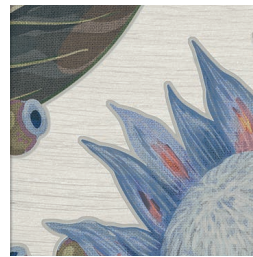
BOTTEGA

COLOURS



Bianco
20x20cm

④



Mural Blu Leaves
20x20cm

③



36 Piece Set



Mural Spring Leaves
20x20cm

③



36 Piece Set



Mural Autumn Leaves
20x20cm

③



36 Piece Set

Slip Resistance		
	R10	+36





Play 20x20cm



Mural Autumn Leaves 20x20cm











Mural Protea 20x20cm



Mural Spring Leaves 20x20cm

TECHNICAL FEATURES

		Norm Standards		Test Results
	Product Classification	UNI EN 14411		EN14411 Annexe G
	Dimensional and surface quality	UNI EN ISO 10545-2		Complies with Standards
	Water absorption	UNE-EN-ISO 10545-3		< 0.5%
	Breaking Strength	UNI EN ISO10545-4		>35N/mm2
	Resistance to Surface Abrasion	UNI EN ISO 10545-7	Bianco & Play Mural Spring Leaves, Mural Autumn Leaves Mural Blu Leaves, Mural Protea, Sonata Deco	PEI 4 PEI 3
	Chemical Resistance	UNI EN ISO 10545-13	Resistance to Acid and Alkali of low concentration Resistance to Acid and Alkali of high concentration Resistance to domestic products and salt for pools	>GLB >GHB >GB
	Slip Resistance	DIN 51130		R10
	Stain Resistance	UNI EN ISO 10545-14		Minimum Class 3

Waxman Ceramics Architectural Tiles

Head Office **01422 377123**

Grove Mills
Elland
West Yorkshire
HX5 9DZ
England

Email info@waxmanarchitectural.co.uk
Web www.waxmanarchitectural.co.uk

Waxman Ceramics Architectural Tiles is a division of Waxman Ceramics Ltd - Part of the Waxman Group

The information contained within this document is, to the best of our knowledge, accurate at the time of production. We reserve the right to modify this document at any time. Whilst every attempt has been made to accurately reproduce colours and textures, images used within this document are only intended as a guide. Please refer to actual product samples before specifying or ordering.