



Waxman Ceramics
Architectural Tiles



DE

series

DEMETER

Porcelain Stoneware
EN14411 Annexe G - BL a



DE Series

Matt Porcelain

DEMETER

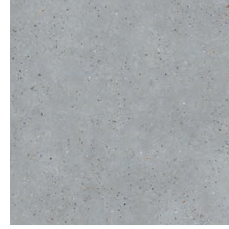
COLOURS



DE-335
Blue
90x90cm



DE-336
Green
90x90cm



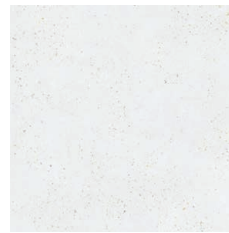
DE-337
Grey
90x90cm



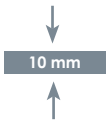
DE-338
Sand
90x90cm



DE-339
Silver
90x90cm



DE-340
White
90x90cm



Slip Resistance		
	R10	+36



DE-335 Blue



DE-335 Blue



DE-336 Green & DE-339 Silver



DE-337 Grey



DE-338 Sand

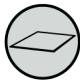






DE-339 Silver



DE-340 White

TECHNICAL FEATURES

		Norm Standards	Test Results
	Product Classification	UNI EN 14411	EN14411 Annexe G - BL a
	Water absorption	UNE-EN-ISO 10545-3	<0.5%
	Frost resistance	UNI EN ISO 10545-12	Resistant
	Thermal shock resistance	UNI EN ISO 10545-9	Resistant
	Slip resistance	UNE-ENV 12633 BS7976-2	C2 +36

Waxman Ceramics Architectural Tiles

Head Office **01422 377123**

Grove Mills
Elland
West Yorkshire
HX5 9DZ
England

Email info@waxmanarchitectural.co.uk
Web www.waxmanarchitectural.co.uk

Waxman Ceramics Architectural Tiles is a division of Waxman Ceramics Ltd - Part of the Waxman Group

The information contained within this document is, to the best of our knowledge, accurate at the time of production. We reserve the right to modify this document at any time. Whilst every attempt has been made to accurately reproduce colours and textures, images used within this document are only intended as a guide. Please refer to actual product samples before specifying or ordering.