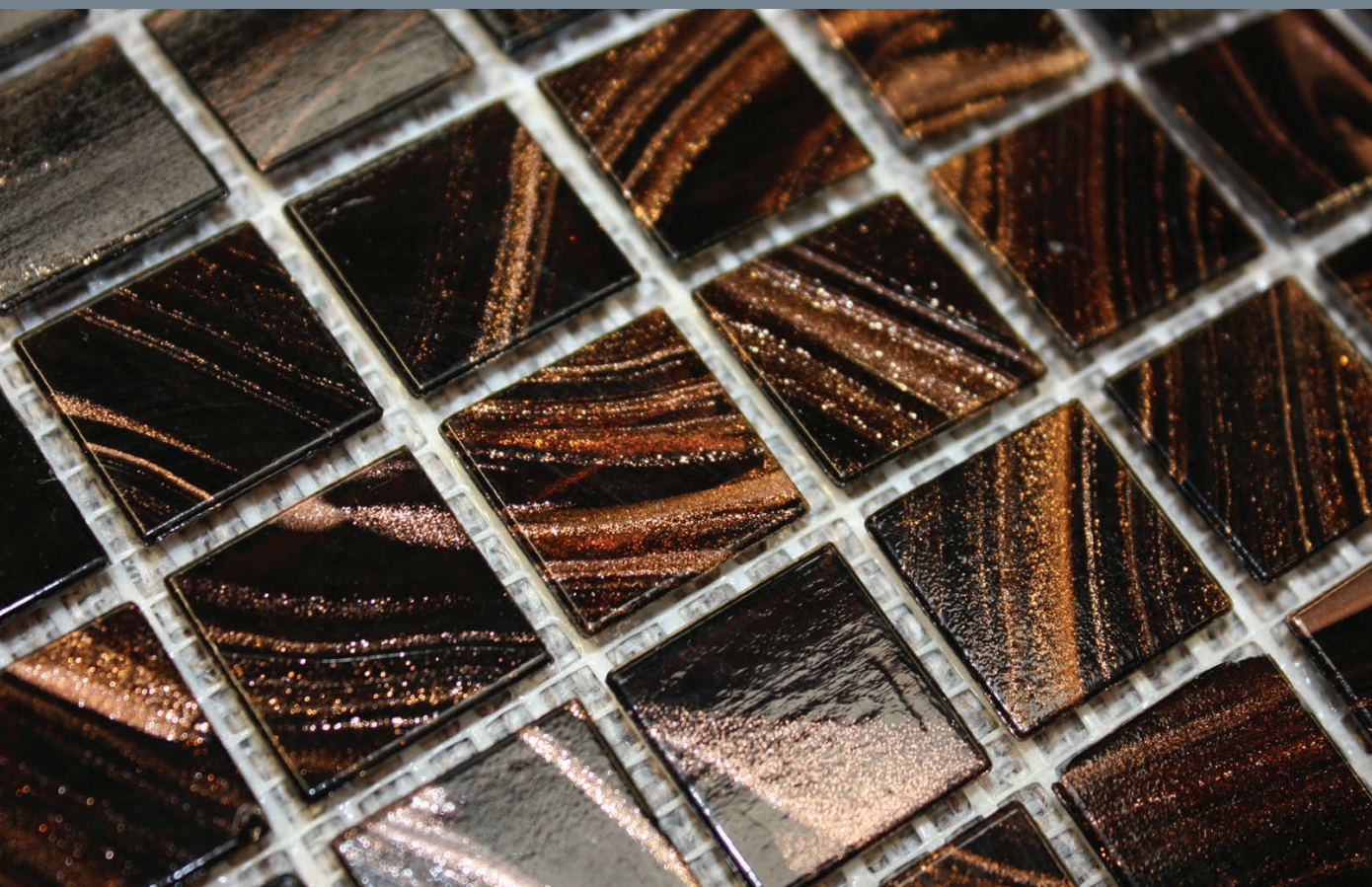




Waxman Ceramics



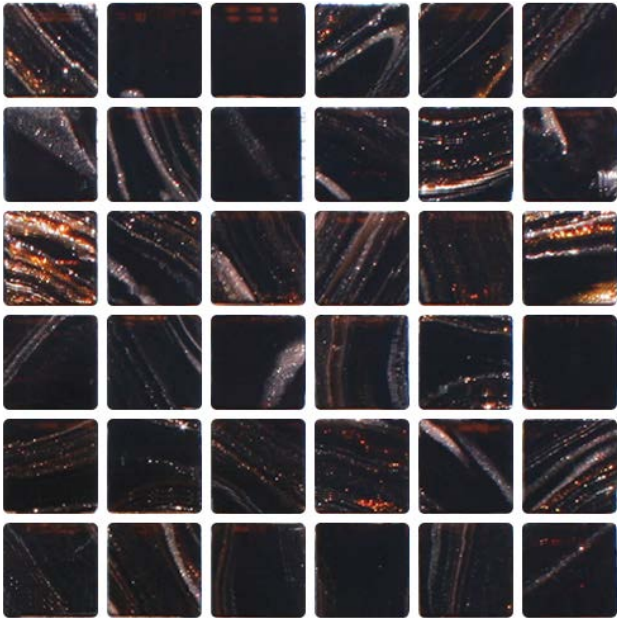
JEWEL

Glass Mosaics
20x20mm



mosaic
collection

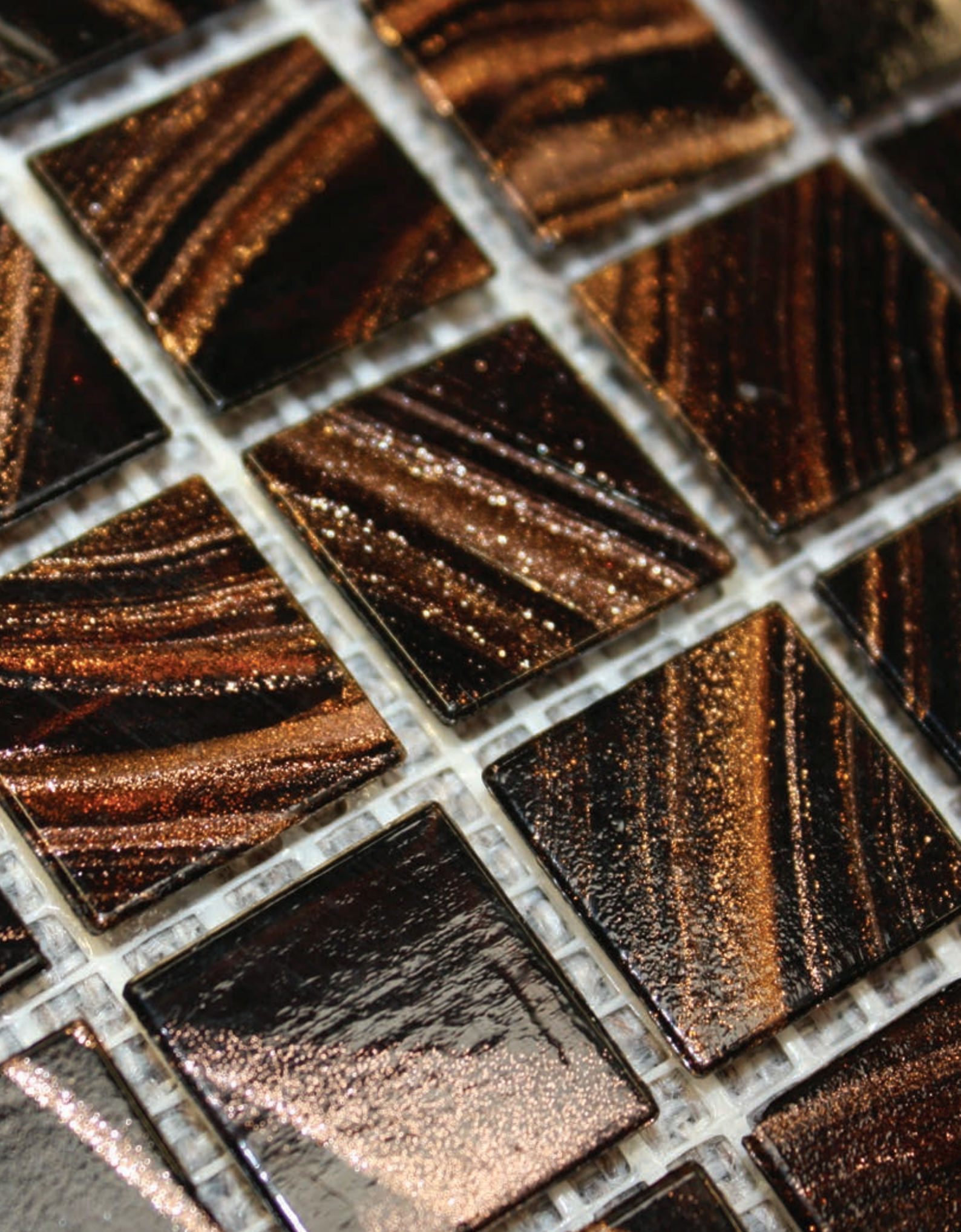
COLOURS



KG-48
Gomeda

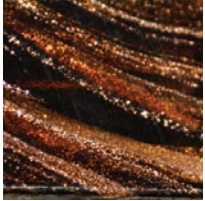


KG-48 Gomeda - 20x20mm



KG-48 Gomeda - 20x20mm

SPECIFICATION



SIZE	20x20mm
THICKNESS	4mm

Vitrified ✓		
	Internal	External
Walls	✓	✓
Floors	✗	✗

Sheet size	32.7x32.7 cm
Backing	Mesh backing

Waxman Ceramics

Head Office **01422 311331**

Grove Mills
Elland
West Yorkshire
HX5 9DZ
England

Email info@waxmanceramics.co.uk
Web www.waxmanceramics.co.uk

Waxman Ceramics Ltd - Part of the Waxman Group

The information contained within this document is, to the best of our knowledge, accurate at the time of production.
We reserve the right to modify this document at any time.
Whilst every attempt has been made to accurately reproduce colours and textures, images used within this document are only intended as a guide.
Please refer to actual product samples before specifying or ordering.

REF: 21/11