



**Waxman Ceramics**  
Architectural Tiles



 **MURALS**

**collection**

**BELLAGIO**

Glazed Ceramic  
UNI EN14411  
Annexe L Group B111

EPD 

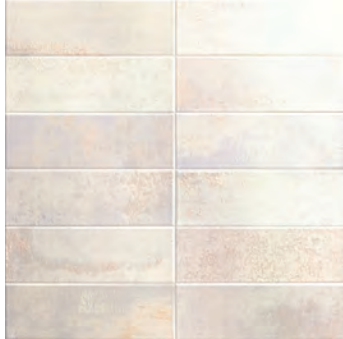


# MURALS

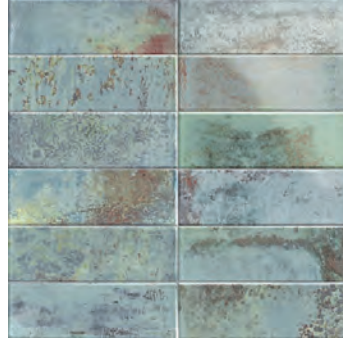
Glazed Ceramic

# BELLAGIO

## COLOURS



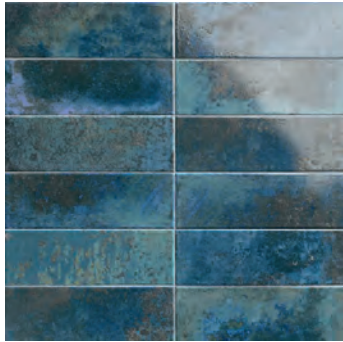
**Bianco**  
10x30cm



**Aquamarine**  
10x30cm



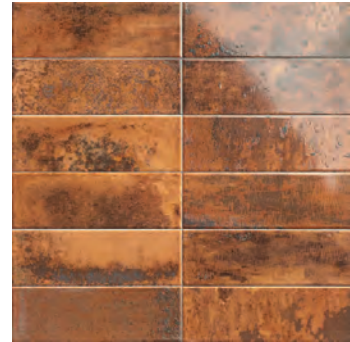
**Smeraldo**  
10x30cm



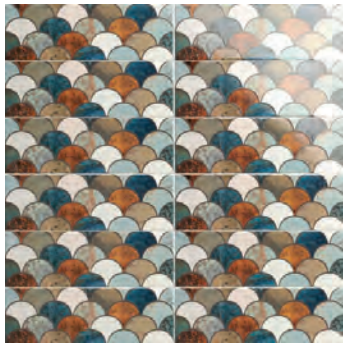
**Blu**  
10x30cm



**Caramel**  
10x30cm



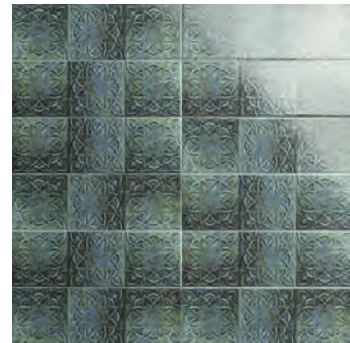
**Fuocco**  
10x30cm



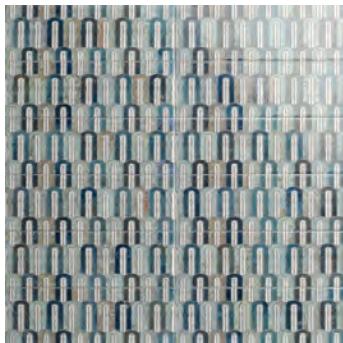
**Caramel Scale Decor**  
10x30cm



**Blu Scale Decor**  
10x30cm



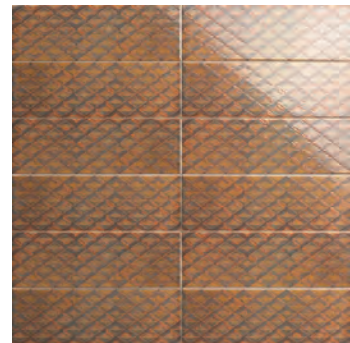
**Stampatto Decor**  
10x30cm



**Blu Arco Decor**  
10x30cm



**Caramel Arco Decor**  
10x30cm



**Reflex Decor**  
10x30cm





Bellagio Fuocco 10x30cm



Bellagio Caramel 10x30cm



Bellagio Caramel 10x30cm / Caramel Scale Decor 10x30cm



Bellagio Blu 10x30cm



Bellagio Bianco 10x30cm / Arco Blu Decor 10x30cm



Bellagio Smearlo 10x30cm / Stampatto Decor 10x30cm





Bellagio Bianco 10x30cm / Reflex Decor 10x30cm



Bellagio Bianco 10x30cm

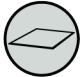






Bellagio Aquamarine 10x30cm / Bellagio Bianco 10x30cm



Bellagio Fuocco 10x30cm / Caramel Arco Decor 10x30cm

## TECHNICAL FEATURES

		Norm Standards	Test Results
	Product Classification	UNI EN 14411	Annexe L Group BIII
	Dimensional and surface quality	UNI EN ISO 10545-2	Complies with Standards
	Water absorption	UNE-EN-ISO 10545-3	> 10%
	Breaking Strength	NI EN ISO10545-4	>600 N
	Stain resistance	UNI EN ISO 10545-14	Class 3

# Waxman Ceramics Architectural Tiles

---

**Head Office**                      **01422 377123**

Grove Mills  
Elland  
West Yorkshire  
HX5 9DZ  
England

Email            [info@waxmanarchitectural.co.uk](mailto:info@waxmanarchitectural.co.uk)  
Web              [www.waxmanarchitectural.co.uk](http://www.waxmanarchitectural.co.uk)

**Waxman Ceramics Architectural Tiles is a division of Waxman Ceramics Ltd - Part of the Waxman Group**

The information contained within this document is, to the best of our knowledge, accurate at the time of production. We reserve the right to modify this document at any time. Whilst every attempt has been made to accurately reproduce colours and textures, images used within this document are only intended as a guide. Please refer to actual product samples before specifying or ordering.