



Waxman Ceramics
Architectural Tiles



 **MURALS**

collection

TRINITY

Glazed Porcelain
EN14411 Annexe G
Group Bla

EPD 

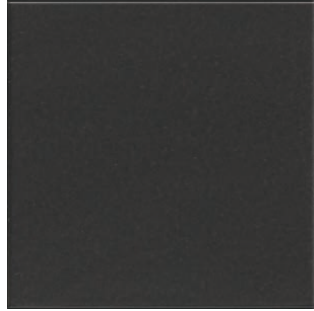


MURALS

Glazed Porcelain

TRINITY

COLOURS



Riga Black
20x20cm

②



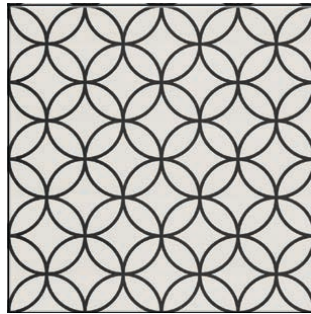
Riga White
20x20cm

④



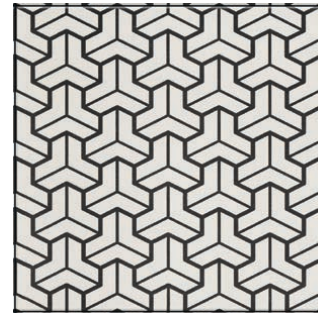
Cavan
20x20cm

③



Samara White
20x20cm

④

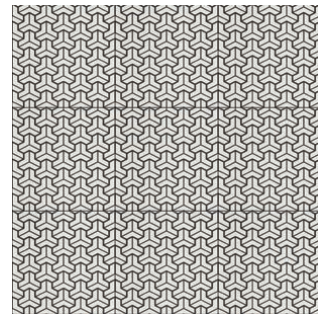
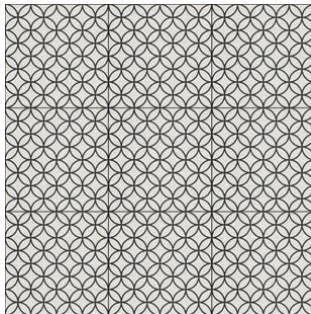


Zenit White
20x20cm

④



Layout examples



Slip Resistance

	R10	+36

↓
7.5mm

↑
Thickness



Riga Black / Samara White 20x20cm



Samara White 20x20cm











Cavan 20x20cm



Zenit White 20x20cm

TECHNICAL FEATURES

		Norm Standards		Test Results								
	Product Classification	UNI EN 14411		EN14411 Annexe G								
	Dimensional and surface quality	UNI EN ISO 10545-2		Complies with Standards								
	Water absorption	UNE-EN-ISO 10545-3		< 0.5%								
	Breaking Strength	UNI EN ISO10545-4		>35N/mm2								
	Resistance to Surface Abrasion	UNI EN ISO 10545-7	Riga Black Cavan Riga White, Samara, Zenit	PEI 2 PEI 3 PEI 4								
	Chemical Resistance	UNI EN ISO 10545-13	Resistance to Acid and Alkali of low concentration Resistance to Acid and Alkali of high concentration Resistance to domestic products and salt for pools	<table border="1"> <thead> <tr> <th>Riga / Cavan</th> <th>Samara / Zenit</th> </tr> </thead> <tbody> <tr> <td>>GLB</td> <td>GLA</td> </tr> <tr> <td>>GHB</td> <td>-</td> </tr> <tr> <td>>GB</td> <td>GA</td> </tr> </tbody> </table>	Riga / Cavan	Samara / Zenit	>GLB	GLA	>GHB	-	>GB	GA
Riga / Cavan	Samara / Zenit											
>GLB	GLA											
>GHB	-											
>GB	GA											
	Slip Resistance	DIN 51130 UNE EN 12633/2003 (Pendulum)		R10 (+36)								
	Stain Resistance	UNI EN ISO 10545-14		<table border="1"> <thead> <tr> <th>Riga / Cavan Min Samara / Zenit</th> <th>Class 3 Class 5</th> </tr> </thead> <tbody> <tr> <td></td> <td></td> </tr> </tbody> </table>	Riga / Cavan Min Samara / Zenit	Class 3 Class 5						
Riga / Cavan Min Samara / Zenit	Class 3 Class 5											

Waxman Ceramics Architectural Tiles

Head Office

01422 377123

Grove Mills
Elland
West Yorkshire
HX5 9DZ
England

Email info@waxmanarchitectural.co.uk

Web www.waxmanarchitectural.co.uk

Waxman Ceramics Architectural Tiles is a division of Waxman Ceramics Ltd - Part of the Waxman Group

The information contained within this document is, to the best of our knowledge, accurate at the time of production. We reserve the right to modify this document at any time. Whilst every attempt has been made to accurately reproduce colours and textures, images used within this document are only intended as a guide. Please refer to actual product samples before specifying or ordering.