



# Waxman Ceramics



# BLAZE

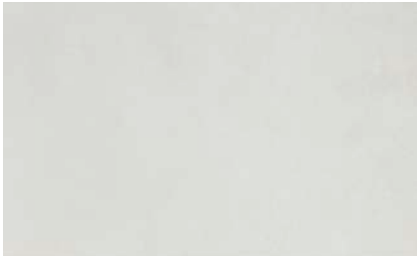
Glazed Ceramic Tiles



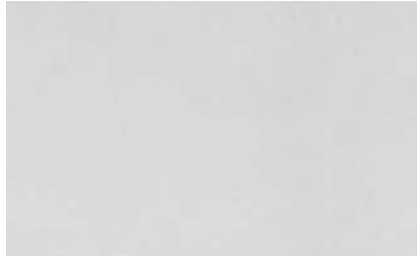
# COLOURS

---

## Wall Tiles



**Blanco**  
33.5x55cm



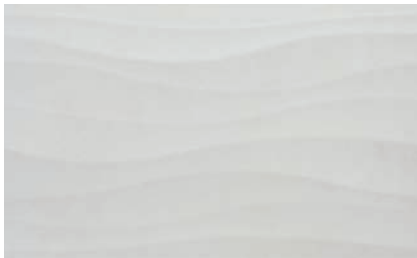
**Perla**  
33.5x55cm



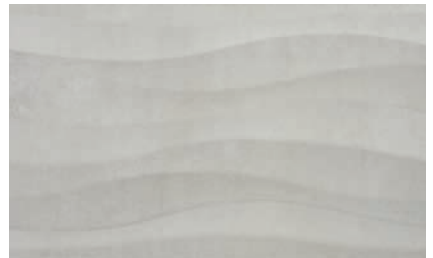
**Tortora**  
33.5x55cm



**Blanco Ondas**  
33.5x55cm

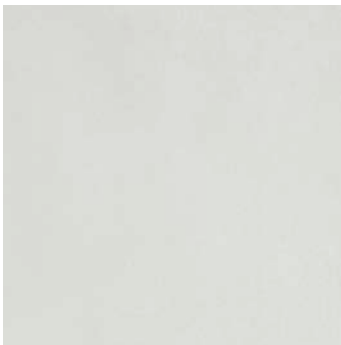


**Perla Ondas**  
33.5x55cm



**Tortora Ondas**  
33.5x55cm

## Floor Tiles



**Blanco**  
45x45cm

④



**Perla**  
45x45cm

④



**Tortora**  
45x45cm

③



Blanco - 33.3x55cm / Tortora - 45x45cm



Perla Ondas - 33.3x55cm / Tortora - 45x45cm

# SPECIFICATION & PACKING

## Glazed Ceramic Tiles

Suitability	Thickness	Walls		Floors		Frostproof	Colour Variation
		Internal	External	Internal	External		
33.3x55cm	8mm	✓				No	V1
45x45cm	8mm	✓		✓		No	V1

Packing	Pcs / ctn	M <sup>2</sup> / Ctn	Kg / Ctn	Ctns / Pallet	M <sup>2</sup> / Pallet
33.3x55cm	10	1.84	27.00	48	88.32
45x45cm	7	1.42	25.50	52	73.84

# Waxman Ceramics

---

**Head Office**                      **01422 311331**

Grove Mills  
Elland  
West Yorkshire  
HX5 9DZ  
England

Email            [info@waxmanceramics.co.uk](mailto:info@waxmanceramics.co.uk)  
Web              [www.waxmanceramics.co.uk](http://www.waxmanceramics.co.uk)

**Waxman Ceramics Ltd - Part of the Waxman Group**

The information contained within this document is, to the best of our knowledge, accurate at the time of production.  
We reserve the right to modify this document at any time.  
Whilst every attempt has been made to accurately reproduce colours and textures, images used within this document are only intended as a guide.  
Please refer to actual product samples before specifying or ordering.

REF: 19/04