



Waxman Ceramics
Architectural Tiles



LN

series

LINCOLN

Porcelain Stoneware
EN14411 Annexe G Group Bla

EPD 



COLOURS



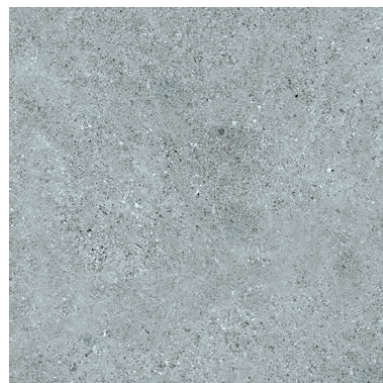
LN-60
Clay



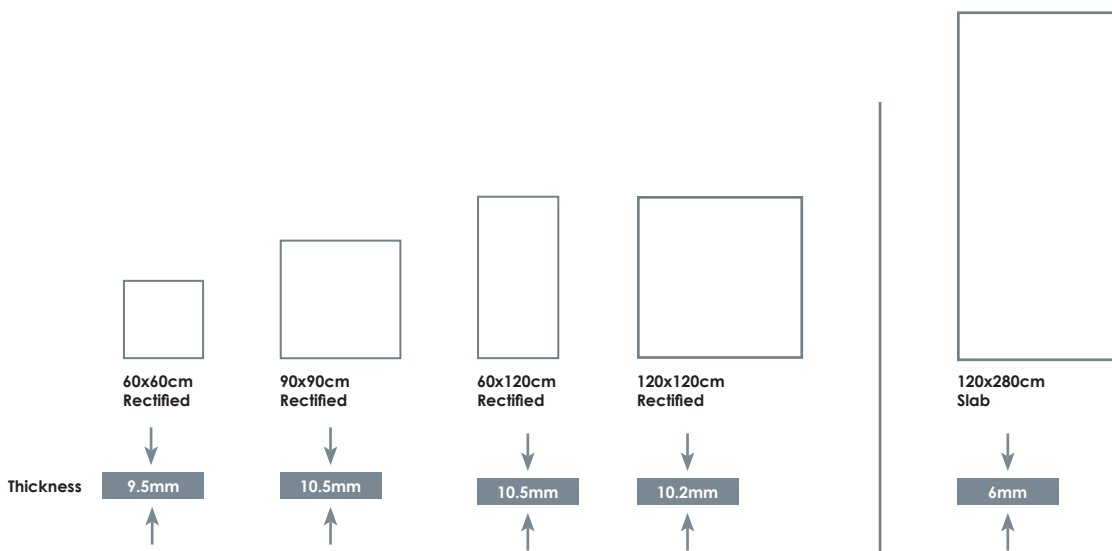
LN-61
Pearl



LN-62
Sand



LN-63
Smoke



Slip Resistance		
	R10	+36
	B	



LN-60 Clay - 120x280cm Slabs / LN-63 Smoke 120x120cm



LN-60 Clay - 120x280cm Slabs

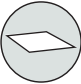









LN-61 Pearl - 120x280cm Slabs



LN-61 Pearl - 120x280cm Slabs

TECHNICAL FEATURES

		Norm Standards	Test Results
	Product Classification	UNI EN 14411	EN14411 Annexe G Group BIa GL
	Dimensional and surface quality	UNI EN ISO 10545-2	Complies
	Water absorption	UNE-EN-ISO 10545-3	< 0.5%
	Flexural strength	UNI EN ISO 10545-4	35-45 N/mm ²
	Frost resistance	UNI EN ISO 10545-12	Resistant
	Resistance to acids and alkalis (except hydrofluoric acid)	UNI EN ISO 10545-13	Complies
	Slip resistance	DIN 51130	R10
		DIN 51097	B
		PTV	+36
	Stain resistance	UNI EN ISO 10545-14	>= Classe 5

Waxman Ceramics Architectural Tiles

Head Office **01422 377123**

Grove Mills
Elland
West Yorkshire
HX5 9DZ
England

Email info@waxmanarchitectural.co.uk
Web www.waxmanarchitectural.co.uk

Waxman Ceramics Architectural Tiles is a division of Waxman Ceramics Ltd - Part of the Waxman Group

The information contained within this document is, to the best of our knowledge, accurate at the time of production. We reserve the right to modify this document at any time. Whilst every attempt has been made to accurately reproduce colours and textures, images used within this document are only intended as a guide. Please refer to actual product samples before specifying or ordering.