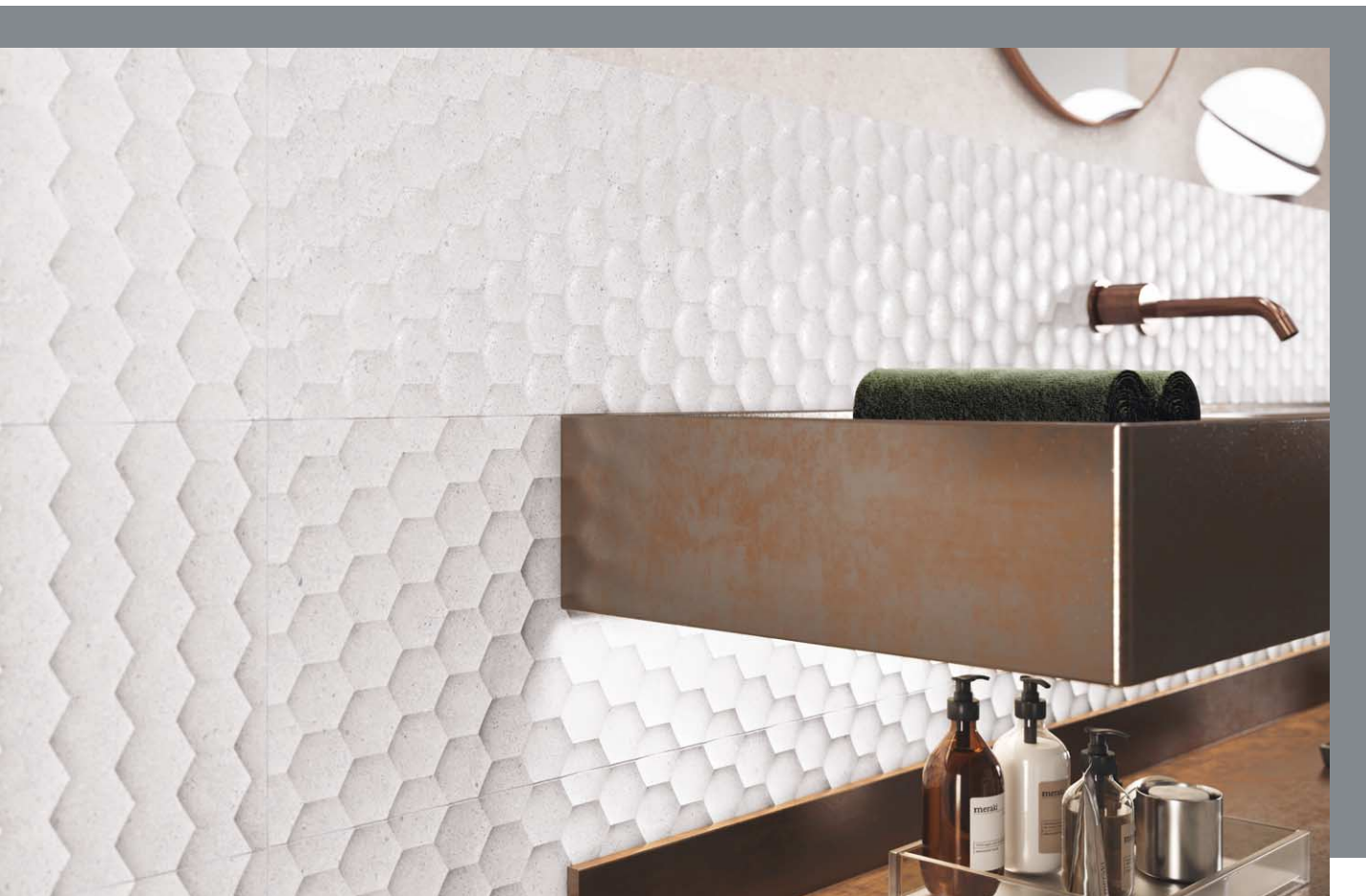




**Waxman Ceramics**



# GRANITE

Glazed Ceramic Wall Tiles  
Glazed Porcelain Floor Tiles

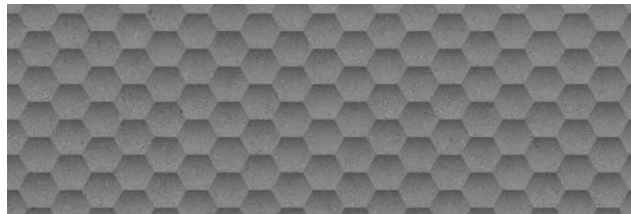


## COLOURS

---



**Antracite**  
30x90cm Rectified



**Antracite Eden Decor**  
30x90cm Rectified



**Cream**  
30x90cm Rectified



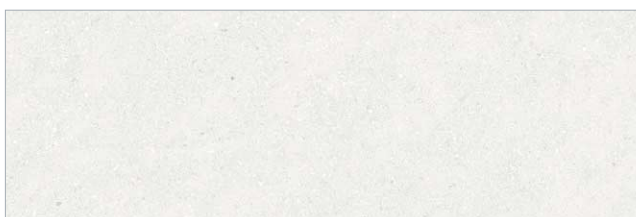
**Cream Eden Decor**  
30x90cm Rectified



**Grey**  
30x90cm Rectified



**Grey Eden Decor**  
30x90cm Rectified

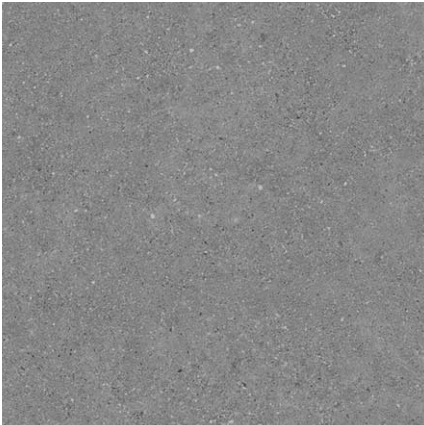


**White**  
30x90cm Rectified



**White Eden Decor**  
30x90cm Rectified

COLOURS



Antracite Matt  
60x60cm Rectified

Antracite Anti-Slip  
60x60cm Rectified

3



Cream Matt  
60x60cm Rectified

Cream Anti-Slip  
60x60cm Rectified

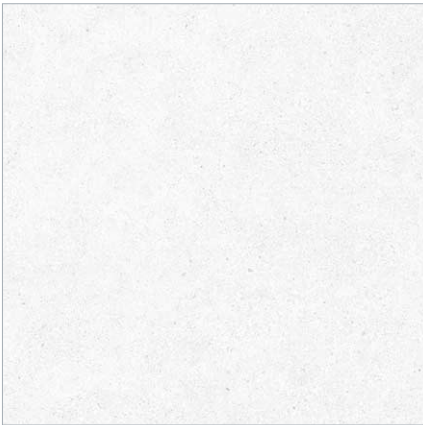
4



Grey Matt  
60x60cm Rectified

Grey Anti-Slip  
60x60cm Rectified

3



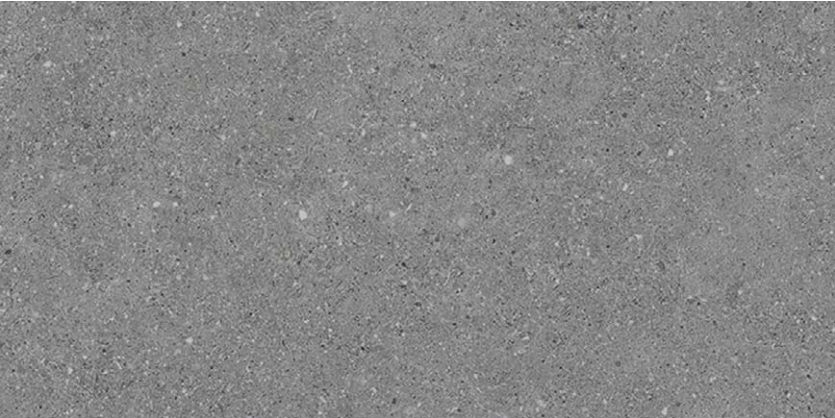
White Matt  
60x60cm Rectified

White Anti-Slip  
60x60cm Rectified

4

Matt Slip Resistance			Anti-Slip Slip Resistance		
	R9	+36		R11	+36
					+40





Antracite Anti-Slip  
60x120cm Rectified

3



Grey Anti-Slip  
60x120cm Rectified

3



Cream Anti-Slip  
60x120cm Rectified

4



White Anti-Slip  
60x120cm Rectified

4

Anti-Slip Slip Resistance		
	R11	+36
		+40





Grey Anti-Slip - 60x120cm





Cream Anti-Slip - 60x120cm





Grey Anti-Slip - 60x120cm



Grey Anti-Slip - 60x120cm





Anthracite Anti-Slip - 60x120cm





Anthracite - 60x60cm / Grey - 30x90cm / Grey Eden Decor - 30x90cm





Grey - 30x90cm





White - 30x90cm



## SPECIFICATION &amp; PACKING

## Glazed Ceramic Wall Tiles - Rectified

Suitability	Thickness	Walls		Floors		Frostproof	Colour Variation
		Internal	External	Internal	External		
30x90cm	10.5mm	✓				No	V2

Packing	Pcs / ctn	M <sup>2</sup> / Ctn	Kg / Ctn	Ctns / Pallet	M <sup>2</sup> / Pallet
30x90cm	5	1.35	25.66	63	85.05
30x90cm Eden Decor	4	1.08	20.53	63	68.04

## Glazed Porcelain Floor Tiles

Suitability	Thickness	Walls		Floors		Frostproof	Colour Variation
		Internal	External	Internal	External		
60x60cm	9mm	✓	✓	✓		Yes	V2
60x120cm	9mm	✓	✓	✓		Yes	V2

Packing	Pcs / ctn	M <sup>2</sup> / Ctn	Kg / Ctn	Ctns / Pallet	M <sup>2</sup> / Pallet
60x60cm	4	1.44	29.53	32	46.08
60x120cm	2	1.44	28.00	36	51.84

# Waxman Ceramics

---

**Head Office**                      **01422 311331**

Grove Mills  
Elland  
West Yorkshire  
HX5 9DZ  
England

Email            [info@waxmanceramics.co.uk](mailto:info@waxmanceramics.co.uk)  
Web              [www.waxmanceramics.co.uk](http://www.waxmanceramics.co.uk)

**Waxman Ceramics Ltd - Part of the Waxman Group**

The information contained within this document is, to the best of our knowledge, accurate at the time of production.  
We reserve the right to modify this document at any time.  
Whilst every attempt has been made to accurately reproduce colours and textures, images used within this document are only intended as a guide.  
Please refer to actual product samples before specifying or ordering.

REF: 24/03