

ARCHITECTURAL COLLECTION

IR Series

# IRIS

Porcelain Stoneware

EN14411 Annexe G - BI a

EPD 



# TILE COLOURS

Porcelain Stoneware

14.8x4.8cm

## IRIS



IR-300.L  
Linen Light



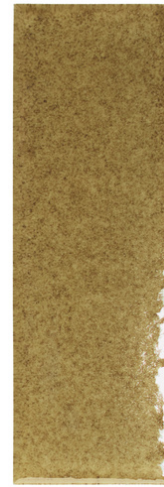
IR-300.M  
Linen Mid



IR-300.D  
Linen Dark



IR-301.L  
Alpi Light



IR-301.M  
Alpi Mid



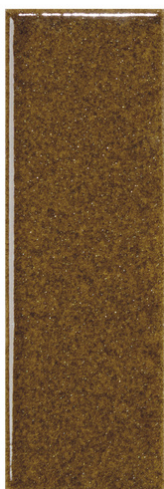
IR-301.D  
Alpi Dark



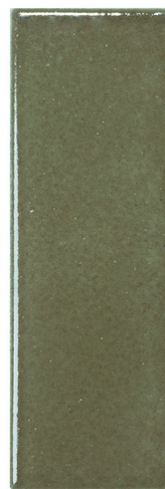
IR-302.L  
Amber Light



IR-302.M  
Amber Mid



IR-302.D  
Amber Dark



IR-303.L  
Evergreen Light



IR-303.M  
Evergreen Mid



IR-303.D  
Evergreen Dark



IR-304.L  
Midnight Light



IR-304.M  
Midnight Mid



IR-304.D  
Midnight Dark



IR-305.L  
Saffron Light



IR-305.M  
Saffron Mid



IR-305.D  
Saffron Dark

# TILE COLOURS

Porcelain Stoneware

14.8x4.8cm

Channel & Bord Décor

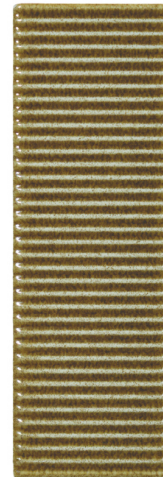
IRIS



IR-300.DC  
Linen Dark Channel



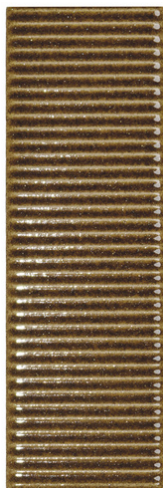
IR-300.DB  
Linen Dark Bord



IR-301.DC  
Alpi Dark Channel



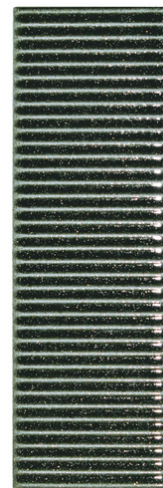
IR-301.DB  
Alpi Dark Bord



IR-302.DC  
Amber Dark Channel



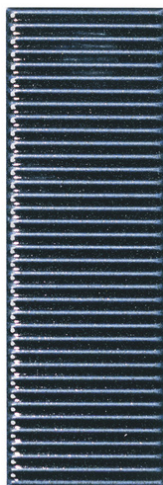
IR-302.DB  
Amber Dark Bord



IR-303.DC  
Evergreen Dark Channel



IR-303.DB  
Evergreen Dark Bord



IR-304.DC  
Midnight Dark Channel



IR-304.DB  
Midnight Dark Bord



IR-305.DC  
Saffron Dark Channel



IR-305.DB  
Saffron Dark Bord



Iris Alpi Light  
Iris Alpi Mid  
Iris Alpi Dark  
Iris Alpi Dark Bord





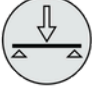




Iris Linen Light  
Iris Linen Mid  
Iris Linen Dark  
Iris Linen Dark Bord  
Iris Linen Dark Channel



Iris Midnight Mid  
Iris Midnight Dark  
Iris Midnight Dark Channel  
Iris Linen Mid



Iris Saffron Light  
Iris Saffron Mid  
Iris Saffron Dark  
Iris Evergreen Dark Channel

		Norm Standards	Test Results
	<b>Product Classification</b>	<b>UNI EN 14411</b>	<b>Porcelain Stoneware EN14411 Annexe G Group Bla</b>
	<b>Dimensional and surface quality</b>	<b>UNI EN ISO 10545-2</b>	<b>48.0mm +/- 0.5mm x 148.0mm +/- 0.9mm</b>
	<b>Water absorption</b>	<b>UNE-EN-ISO 10545-3</b>	<b>&lt;=0.5%</b>
	<b>Flexural strength</b>	<b>UNI EN ISO 10545-4</b>	<b>35N/mm2 1300N</b>
	<b>Frost resistance</b>	<b>UNI EN ISO 10545-12</b>	<b>Resistant</b>
	<b>Resistance to acids and alkalis (except hydrofluoric acid)</b>	<b>UNI EN ISO 10545-13</b>	<b>GA</b>
	<b>Wear and abrasion resistance</b>	<b>UNI EN ISO 10545-6</b>	<b>Not Apply</b>
	<b>Thermal shock resistance</b>	<b>UNI EN ISO 10545-9</b>	<b>Not Apply</b>
	<b>Colour resistance to sunlight exposure</b>	<b>DIN 51094</b>	<b>No change of colours</b>
	<b>Stain resistance</b>	<b>UNI EN ISO 10545-14</b>	<b>Class 5</b>

Size	Thickness	Internal Walls	External Walls	Internal Floors	External Floors	Frostproof	Colour Variation	Packing				
								Pcs / Ctn	M <sup>2</sup> / Ctn	Kg / Ctn	Ctns / Pallet	M <sup>2</sup> / Pallet
14.8x4.8cm	8.5mm	•	•	Linen Only	Linen Only	Yes	V1	78	0.55	10.98	75	41.55
14.8x4.8cm (Channel)	8.5mm	•	•			Yes	V1	78	0.55	10.9	75	41.55
14.8x4.8cm (Bord)	8.5mm	•	•			Yes	V1	72	0.51	9.99	75	38.4



 **WAXMAN CERAMICS**  
— Architectural Tiles —

 **01422 377123**

 **[www.waxmanarchitectural.co.uk](http://www.waxmanarchitectural.co.uk)**

 **[info@waxmanceramics.co.uk](mailto:info@waxmanceramics.co.uk)**

 **Waxman Ceramics**  
**Grove Mills**  
**Elland**  
**West Yorkshire**  
**HX5 9DZ**

The information contained within this document is, to the best of our knowledge, accurate at the time of production.  
We reserve the right to modify this document at any time.  
Whilst every attempt has been made to accurately reproduce colours and textures, images used within this document are only intended as a guide.  
Please refer to actual product samples before specifying or ordering.