

SH

series

SHERWOOD

Glazed Porcelain Tiles

UNI EN14411

Annexe G - Bla

# COLOURS

## 10x50cm Strip



SH-101 Contempo - Natural  
10x50cm Strip (3)



SH-102 Contempo - Oak  
10x50cm Strip (3)



SH-103 Contempo - Ash  
10x50cm Strip (3)



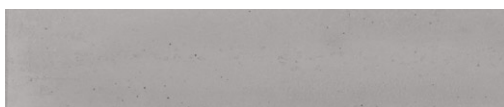
SH-104 Contempo - Walnut  
10x50cm Strip (3)



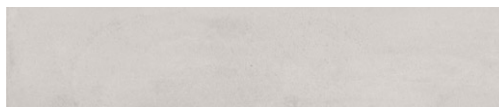
SH-121 Calacatta  
10x50cm Strip (4)



SH-112 Timber Brown  
10x50cm Strip (2)



SH-142 Concrete Ash Grey  
10x50cm Strip (3)



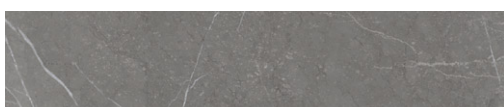
SH-141 Concrete Light Grey  
10x50cm Strip (3)



SH-151 Petra Sand  
10x50cm Strip (3)



SH-131 Aura  
10x50cm Strip (4)



SH-153 Petra Charcoal  
10x50cm Strip (2)



SH-152 Petra Grey  
10x50cm Strip (3)

Slip Resistance Calacatta		
	R9	

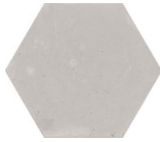
Slip Resistance Other Colours		
	R10	

# COLOURS

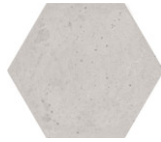
## 20x23cm Hexagon



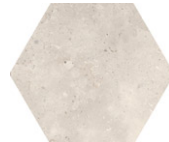
SH-301 Calacatta  
20x23cm Hexagon ④



SH-341 Concrete  
Light Grey 20x23cm  
Hexagon ③



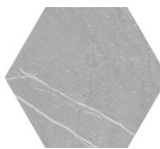
SH-342 Concrete  
Ash Grey 20x23cm  
Hexagon ③



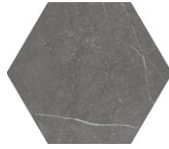
SH-331 Aura  
20x23cm Hexagon ④



SH-351 Petra - Sand  
20x23cm Hexagon ③



SH-352 Petra - Grey  
20x23cm Hexagon ③



SH-353 Petra - Charcoal  
20x23cm Hexagon ②

Slip Resistance Calacatta		
	R9	

Slip Resistance Other Colours		
	R10	+36

# COLOURS

---

## 3.7x13.5cm Mini Lozenge



SH-801  
Contempo - Natural (3)



SH-802  
Contempo - Oak (3)



SH-803  
Contempo - Ash (3)



SH-804  
Contempo - Walnut (3)



SH-811  
Timber - Grey (3)



SH-812  
Timber - Brown (2)



SH-821  
Calacatta (4)



SH-831  
Aura (4)



SH-841  
Concrete - Light Grey (3)



SH-842  
Concrete - Ash (3)



SH-851  
Petra - Sand (3)



SH-852  
Petra - Grey (3)



SH-853  
Petra - Charcoal (2)



SH-121 Calacatta 10x50cm Strip / SH-142 Concrete Ash Grey 10x50cm Strip



SH-121 Calacatta 10x50cm Strip / SH-105 Timber Brown 10x50cm Strip











SH-321 Calacatta 20x23cm Hexagon / SH-342 Concrete Ash Grey 20x23cm Hexagon



SH-152 Petra Grey 10x50cm Strip / SH-101 Contempo - Natural 10x50cm Strip

## TECHNICAL FEATURES

		Norm Standards	Test results
	Product Classification	UNI EN14411 Annexe G	Group B1a UGL fully vitrified
	Dimensional and surface quality	UNE-EN ISO 10545-2: 1998	Conforms
	Water absorption	UNE-EN ISO 10545-3:1997	0.5%
	Flexural strength	UNE-EN ISO 10545-4: 2012	≥ 35N/mm <sup>2</sup>
	Frost resistance	UNE-EN ISO 10545-12:1997	Resistant
	Resistance to acids and alkalis (except hydrofluoric acid)	UNE-EN ISO 0545-13:1998	GHA
	Stain resistance	UNE-EN ISO 10545-14:1998	Class 5
	Slip resistance	DIN 51130:2014 ANSI A137.1:2012	R10 Contempo, Timber, Concrete Petra & Aura R9 Calacatta

# Waxman Ceramics Architectural Tiles

---

**Head Office**                      **01422 377123**

Grove Mills  
Elland  
West Yorkshire  
HX5 9DZ  
England

Email            [info@waxmanarchitectural.co.uk](mailto:info@waxmanarchitectural.co.uk)  
Web              [www.waxmanarchitectural.co.uk](http://www.waxmanarchitectural.co.uk)

**Waxman Ceramics Architectural Tiles is a division of Waxman Ceramics Ltd - Part of the Waxman Group**

The information contained within this document is, to the best of our knowledge, accurate at the time of production.  
We reserve the right to modify this document at any time.  
Whilst every attempt has been made to accurately reproduce colours and textures, images used within this document are only intended as a guide.  
Please refer to actual product samples before specifying or ordering.

REF: 24/01