

TILE COLLECTION

# MAYFAIR

Glazed Ceramic | Glazed Porcelain  
EN11411 Annexe L – BIII | EN11411 Annexe G – BI a

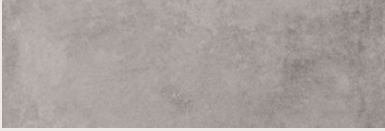


WAXMAN CERAMICS

EST. 1981

# COLOURS

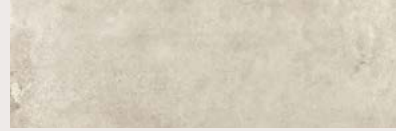
Glazed Ceramic  
30x90cm (R)  
Annexe L - Bill



Ash



Bone



Beige



Ash Decor

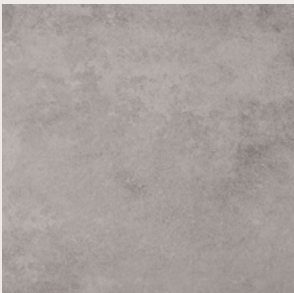


Bone Decor



Beige Decor

Glazed Porcelain  
60x60cm (R)  
Annexe G - Bla



Ash



Bone



Beige

(60x60cm only)

Slip Resistance

	R9	+36
		

Material	Size	Thickness	Internal walls	External walls	Internal floors	External floors	Frostproof	Colour Variation	Packing				
									Pcs / ctn	M <sup>2</sup> / Ctn	Kg / Ctn	Ctns / Pallet	M <sup>2</sup> / Pallet
Glazed Ceramic	30x90cm Rectified	8.7mm	•					V3	5	1.35	20.22	63	85.05
Glazed Ceramic	30x90cm Decor Rectified	10.8mm	•					V3	5	1.35	20.22	63	85.05
Glazed Porcelain	60x60cm Rectified	9.5mm	•	•	•			V3	4	1.44	31.5	30	43.2





Beige





Bone & Bone Decor



 **01422 311331**

 **[www.waxmanceramics.co.uk](http://www.waxmanceramics.co.uk)**

 **[info@waxmanceramics.co.uk](mailto:info@waxmanceramics.co.uk)**

 **Waxman Ceramics  
Grove Mills  
Elland  
West Yorkshire  
HX5 9DZ**

The information contained within this document is, to the best of our knowledge, accurate at the time of production.

We reserve the right to modify this document at any time.

Whilst every attempt has been made to accurately reproduce colours and textures, images used within this document are only intended as a guide.  
Please refer to actual product samples before specifying or ordering.