



Waxman Ceramics



LIGHT STONE

Glazed Ceramic & Glazed Porcelain Tiles



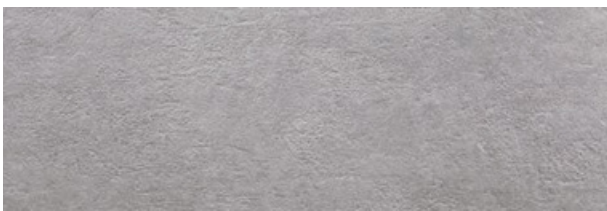
COLOURS



White
29.5x90cm Rectified



Score White
29.5x90cm Rectified



Grey
29.5x90cm Rectified



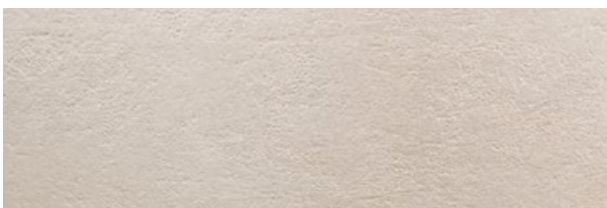
Score Grey
29.5x90cm Rectified



Taupe
29.5x90cm Rectified



Score Taupe
29.5x90cm Rectified



Beige
29.5x90cm Rectified



Score Beige
29.5x90cm Rectified

COLOURS



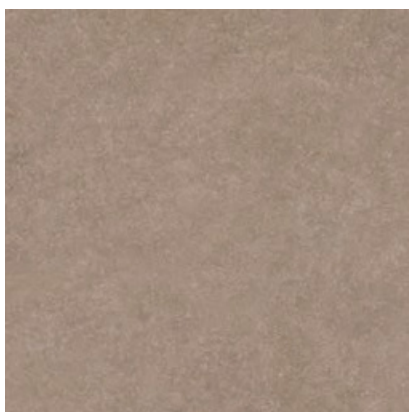
White
60x60cm Rectified

4



Grey
60x60cm Rectified

4



Taupe
60x60cm Rectified

4



Beige
60x60cm Rectified

4



White - 29.5x90cm Rectified / Score White - 29.5x90cm Rectified



Grey - 29.5x90cm Rectified / Score Grey - 29.5x90cm Rectified



Taupe 60x60cm Rectified



Beige - 29.5x90cm Rectified

SPECIFICATION & PACKING

Glazed Ceramic Tiles - Rectified

Suitability	Thickness	Walls		Floors		Frostproof	Colour Variation
		Internal	External	Internal	External		
29.5x90cm	10mm	3				No	V1

Packing	Pcs / ctn	M2/ Ctn	Kg / Ctn	Ctns / Pallet	M2/ Pallet
29.5x90cm	6	1.59	29.5	45	71.55

Glazed Porcelain Tiles - Rectified

Suitability	Thickness	Walls		Floors		Frostproof	Colour Variation
		Internal	External	Internal	External		
60x60cm	10mm	3	3	3		Yes	V1

Packing	Pcs / ctn	M2/ Ctn	Kg / Ctn	Ctns / Pallet	M2/ Pallet
60x60cm	3	1.08	24	40	43.2

Waxman Ceramics

Head Office **01422 311331**

Grove Mills
Elland
West Yorkshire
HX5 9DZ
England

Email

Web info@waxmanceramics.co.uk

Waxman Ceramics Ltd - Part of the Waxman Group

The information contained within this document is, to the best of our knowledge, accurate at the time of production. We reserve the right to modify this document at any time.

Whilst every attempt has been made to accurately reproduce colours and textures, images used within this document are only intended as a guide. Please refer to actual product samples before specifying or ordering.